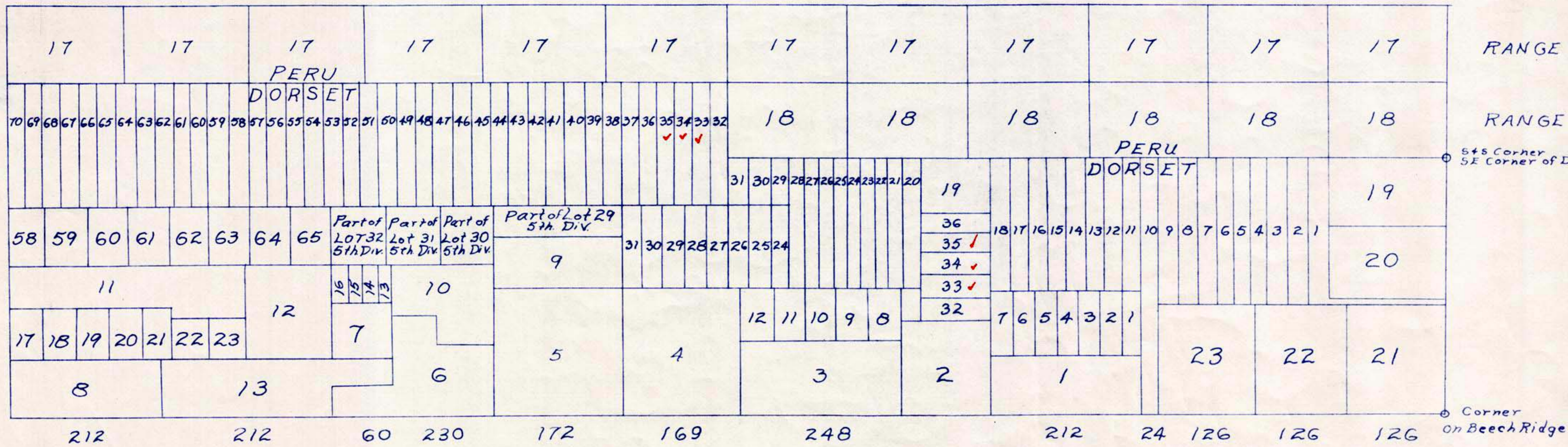


NORTH



PLAT OF
 PART OF DORSET TOWNSHIP,
 BENNINGTON COUNTY, VERMONT.
 Approximate Scale 1 in = 100 rods.

Note:
 See Dorset Town Records, Vol. 15, Pages 349-350.

copy by
 R. Turner
 Vermont Forest Service
 July 6, 1955